

# Development Week 2017: Career Stories

*Engaging people with diverse perspectives to shape our future –How I got here*



**Emma Beglin**  
**Maintenance Engineer**

## Career History:

- Joined BMS in February 2017
- Previously Role: 4 years Process & Equipment Engineer - Intel Ireland

## What first stirred your interest in a career in the Pharmaceutical Industry?

I was interested in chemistry in secondary school and the pharmaceutical modules engaged me in my college course. I was interested in moving to biopharma as from a young age I was engaged with the sciences, I wanted to broaden my horizons and it is a highly innovative industry, with BMS in particular I was drawn to a company which focuses on helping the patient.

## What education and/or other jobs led you to the role you now have?

Scientific background, industrial chemical engineering placement and four years' experience as an engineer, including a start-up.

## What were the biggest surprises or challenges you encountered on your career path and how did you deal with them?

The only constant is change, learn to adjust quickly and tackle each challenge as it comes.

## What skills/behaviours from your previous career do you feel you have leveraged at BMS?

Various aspects of my previous experience in Intel, built skills which are transferable to Biopharma; such as teamwork, project management, problem-solving skills, and communication skills. Decision-making and strategic thinking are valuable transferable skills in any work environment. This is particularly true in semi-conductors and biopharmaceuticals.....



# Bristol-Myers Squibb

In these industries, engineers must constantly innovate and plan far in advance to make complex projects successful. Furthermore, solving problems as they come up is not enough. You must also be able to find problems in advance, prioritize these problems, and find the right solutions to the right problems. Preventative maintenance planning and monitoring trends in my previous role, is similar to what is required in my current role. Prevention is always better than cure.

Similarly to the semiconductor industry, biopharmaceutical industries are highly innovative and evolve rapidly. If you want to be successful in these industries, you must learn to stay on top of key business trends, including financial and regulatory changes influencing each industry sector. You have to see the bigger picture. In my previous role I had experience with making financial projections, manage budgets and timelines, as well as predicting trends that might affect the company's bottom line. As part of BMS's behavior of accountability, I must be able to understand what people do and the impact I have on them. In my previous role, chips were being produced to meet our customer needs, if our machines went down we could delay in getting our product shipped out to our customer's on time. Similarly, in my current role, I need to ensure that the upstream team have everything complete on the maintenance life cycle plan to meet blue tag handover, for the overall bigger picture of being able to get Opdivo (nivolumab) out to the patients.

## What does Career Development mean for you?

To be successful in life, if I am learning something new every day, moving forward to take on new challenges in a personally determined, evolving direction.

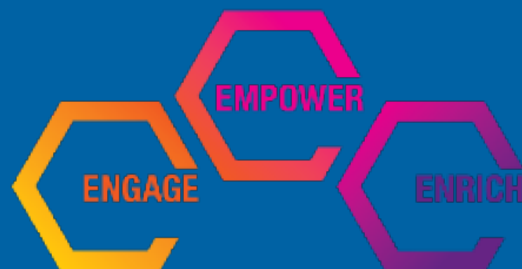
## What is your favourite motivational quote?

One by Mohammed Ali, either:

'He who is not courageous enough to take risks will accomplish nothing in life'

or

'Don't count the days, make the days count.'



*Shift Your Mindset...Discover Your Potential*